



JOINT MEETING

Wednesday, October 13, 2021

New York State Museum

222 Madison Avenue, Albany, New York

New York State Museum

New York State Geological Survey

New York State Council of Professional Geologists (NYSCPG)

Hudson-Mohawk Professional Geologists Association (HMPGA)



AGENDA

1:00 – 3:00 PM NYSCPG FALL MEMBERSHIP MEETING in the Huxley Theater

Board of Directors 2022 Elections; and discussions regarding NYSCPG's authorization to approve providers of Continuing Education for Geology; Role/Need for part-time Executive Director; Lobbying Needs; Membership Concerns

3:00 – 4:00 PM OPEN HOUSE COLLECTION TOURS **Tour A:** Tour the

Mineralogy Collection with Dr. Marian Lupulescu then learn about Open File with Kathleen Bonk. **Tour B:** Tour the Paleontology Collection with Dr. Lisa Amati then learn about our Sedimentology Collection with Dr. Chuck Ver Straeten. Each tour is limited to 15 people. Contact Lisa Amati (Lisa.Amati@nysed.gov) to reserve your place. Some space may be available at the event, but pre-registration is preferred."

4:00 – 5:00 PM OPEN HOUSE FOR EARTH SCIENCE WEEK with the New York State Museum and New York State Geological Survey Meet the NYS Museum's Geology personnel.

5:00 – 6:00 PM EVENING PROGRAM in the Huxley Theater with

Keynote Speaker Dr. Ed Landing, former State Paleontologist: *Talks and thoughts from the 2021 Geological Society of America meeting – the (very!) shallow-marine origin of oil and gas and good, poor, and political choices in global divisions of the Cambrian geologic period* • John M. Clarke Medal ceremony for Dr. Landing for his monumental contributions to the science of stratigraphy and paleontology

6:00 PM SOCIAL GATHERING at Hill Street Café Located a short walk from the NYS Museum at 180 Madison Avenue • Food and beverages available for purchase • Free Parking •

The cost of the evening program is \$10 | Register on-line at www.hmpga.net by Monday, October 11th

Call or email Marie Cole at (518) 724-7254 • marie.cole@ramboll.com

Sponsorship is available for this meeting! Contact Jesse Vollick at jesse.vollick@ramboll.com for more information.

President's Message

Dear HMPGA Members,

Happy fall! We had a great start to the 2021-2022 season with September's monthly meeting, our first in-person routine event since the onset of the pandemic. Thanks again to Bob Dineen for speaking during the meeting which had an excellent turnout. Over 50 people including a sizable contingent of underclassmen from Skidmore College were in attendance. The great events continue into October as we participate in a special, joint-meeting at the New York State Museum. Be sure to review the October 13th program agenda as there are several additions to our typical meeting. These include two NYS Museum Open House Collection Tours which will only be available for HMPGA and NYSCPG members (pre-registration is required with Lisa Amati via email at Lisa.Amati@nysed.gov) and a social gathering at Hill Street Café following Dr. Ed Landing's keynote talk.

Please join me in congratulating Andrew Clift, PhD for his induction as a member of the HMPGA Board of Directors in September. A former resident of the Capital District, Andrew recently returned to the region with his family to work at H2H Geoscience Engineering. Andrew received a BS in Geology from Syracuse University and his PhD in Geology and Geological Engineering from the South Dakota School of Mines and Technology. He worked as a Geologist in the Exploration and Production Department for Chesapeake Energy in Powder River Basin, Wyoming prior to joining H2H.

With Andrew's addition, there is still one vacancy on the HMPGA Board of Directors. As always, there are also other opportunities within HMPGA for members to provide support. I encourage interested persons to contact me directly.

Stay healthy,

Jesse Vollick, P.G.
President 2021-2022

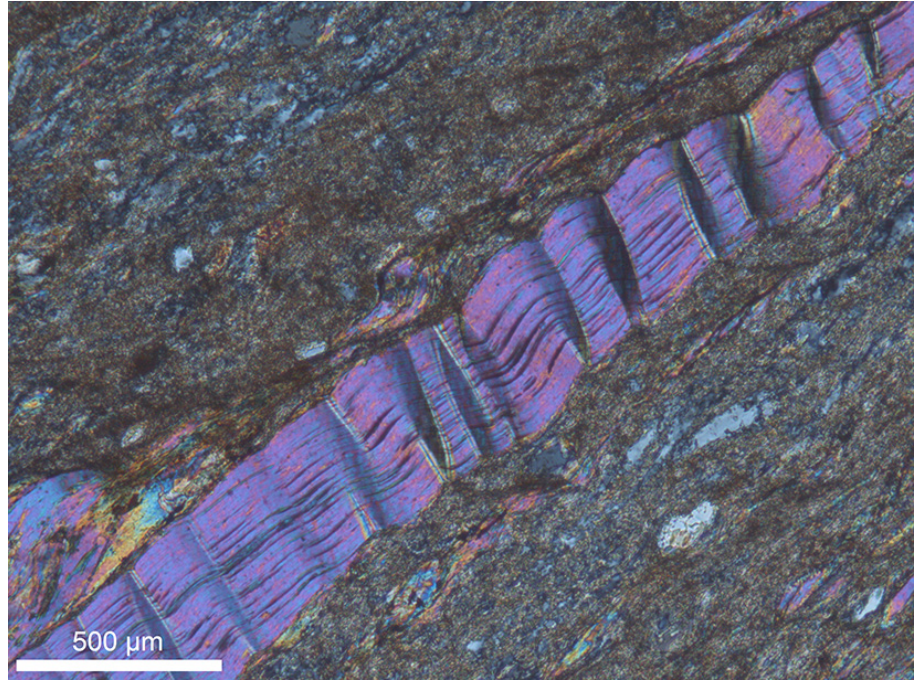
Tiny Kinks Record Ancient Quakes

by Alka Tripathy-Lang

As Earth ruptures, micas kink. These kink bands hide in rocks millions of years old, preserving evidence of past quakes.

Every so often, somewhere beneath our feet, rocks rupture, and an earthquake begins. With big enough ruptures, we might feel an earthquake as seismic waves radiate to or along the surface. However, a mere 15% to 20% of the energy needed to break rocks in the first place translates into seismicity, scientists suspect.

<https://eos.org/articles/tiny-kinks-record-ancient-quakes>



LaBella
Powered by partnership.

Remediation Solutions
Environmental Consulting
Drilling Applications
Litigation Support

LABELLAPC.COM
(518) 885-5383

geotech

Ground Water Sampling, Monitoring
& Remediation Equipment

Peter M. Murray – Regional Sales Manager
PeterM@geotechenv.com
Cell 802-310-8357
1-800-558-5325

Geotech Environmental Equipment, Inc.
15 Tigan Street, Suite 1503
Winooski, Vermont 05404
Phone 802-651-3050 FAX 802-651-3051

**Corporate
Headquarters**

2650 East 40th Avenue
Denver, Colorado 80205
1-800-833-7958
Phone 303-320-4764
FAX 303-322-7242
www.geotechenv.com

Corbett Industrial Cleaning Services, Inc.



Lynne Farrell, Project Manager

Serving New York, New Jersey and New England
lfarrell@corbettindustrial.com | Office 518-439-3950 Cell 518-688-7393
www.corbettindustrialcleaning.com



Environmental
Remediation
Military Munitions Response
Water Resources
Architecture-Engineering
Energy
Modeling/Optimization

Eric Evans, P.G. - Regional Office Manager
313 Ushers Rd., Ballston Lake, NY 12019
518-877-0390 / 518-953-0026 Fax / www.hgl.com

MINERAL OF THE MONTH

Danburite

Danburite is known for its distinct, well-formed crystals. Discovered as a distinct species in 1839, it was named after the city of Danbury, Connecticut, where it was first described.

System: Orthorhombic • Appearance: Colorless, white, yellow, brown, orange, pink, gray.

• Localities: Worldwide - Charcas, San Luis Potosi, Mexico is the most well known and proficient locality for large, transparent crystals • Chemical Composition: $\text{CaB}_2\text{Si}_2\text{O}_8$ •

Hardness: 7



<https://www.minerals.net/mineral/danburite.aspx>

50 YEARS
1969 - 2019
**parratt
wolff inc**

Sonic Drilling
Direct Push - Geoprobe
Auger, Air and Fluid Rotary Drilling
Rock Coring and Casing Advancement
Soil, Vapor and Groundwater Sampling
Direct Sensing- MiHpt - OIHPT - HPT - EC
Well Installation, Rehabilitation and Development
Borehole Geophysical and Video Logging
Electrode and Inclinometer Installations
Vacuum Excavation - Soft Digging
Injection Services
Packer Testing

Employee Owned Company Providing Quality Geotechnical and Environmental Drilling Services Since 1969
Syracuse, NY (800) 782-7260 • Lewisburg, PA (570) 523-8913 • Hillsborough, NC (919) 644-2814
www.pwinc.com • info@pwinc.com

Volunteer opportunities

If you need volunteers for an event or would like to get involved in an event please contact Elizabeth Moore at:
mooreelizabeth.07@gmail.com

Job Openings:

Engineering Geologist/Mining Engineer

H2H Geoscience Engineering, PLLC

Troy, NY

Full-Time



H2H Geoscience Engineering, PLLC is a rapidly growing geologic, engineering and environmental consulting firm currently seeking an entry level candidate to join our dynamic team of professionals.

Qualified candidates must have a Bachelor's degree, B.Sc. in Mining Engineering is preferred, or in an associated technical field such as Geology, Geological Engineering, or Civil Engineering. PE/CPG preferred. At least 5 years of geology, mining engineering, or operations experience is preferred.

This position requires willingness to travel to sites throughout the eastern United States for up to a week at a time, ability to work both in the field and office efficiently, excellent communication skills and attention to detail.

For immediate consideration, please e-mail resume to rhisert@h2hg-e.com with "Engineer/Geologist" as the subject header.

Please see the HMPGA website for more details:
<http://www.hmpga.wildapricot.org/page-1604462>

BOARD MEMBERS

Scott Hulseapple

(518) 348-6995

shulseapple@alphageoscience.com

Danylo Kulczycky

(315)382-8777

Dkulczycky@pwinc.com

George Pafumi

rockearth@aol.com

Stephen Truex

stefan.truex@hrpassociates.com

Dax Soule

Dax.Soule@qc.cuny.edu

Andrew Clift

aclift@h2h-e.com

Fox Professional Geology, PLLC

Petrography and Geochemistry Services
Licensed and Insured

Jon S. Fox, P.G.

Owner/Principal Geologist

(315) 935-5467

jon.fox@jonfoxpg.com

www.jonfoxpg.com



Environmental Petrography Services

We characterize the mineralogy/chemistry, texture, structure, porosity, and organic matter content of rock, soil, or sediment to assist and enhance environmental investigation

- ❖ Optical Microscopy
- ❖ X-Ray Powder Diffraction
- ❖ Scanning Electron Microscopy
- ❖ Electron Probe Microanalysis
- ❖ Energy and Wavelength Dispersive Spectroscopy

Geochemistry/Chemical Hydrogeology

We assist with evaluation techniques focused on the chemical properties of water and its interactions with rock, soil, or sediment as a compliment to standard hydrogeology techniques, which typically focus on the physical properties and available quantity of water (i.e., flow paths/flow rates)

- ❖ Water Types/Hydrochemical Facies Evaluation
- ❖ Graphical Data Analysis/Mapping
- ❖ Geochemical Calculations/Modeling
- ❖ Statistical Analysis

OFFICERS

President

Jesse Vollick
(518) 453-8749

jesse.Vollick@ramboll.com

Vice President

Brian Taylor
(518) 560-5907

BTaylor@BrwnCald.com

Treasurer

Elizabeth Moore
(518)812-6984

Mooreelizabeth.07@gmail.com

secretary

Dax Soule

Dax.Soule@qc.cuny.edu

Past President

Josh Gowan
(518) 348-6995

Jgowan@alphageoscience.com

Alpha Geoscience

Professional Geologic and Hydrogeologic Consulting

Independent Laboratory Data Validation

Emergent Contaminants
PFOS, PFOA, and other PFAS
1,4-Dioxane

Quality Assurance/Quality Control
Validation of soil, water, and air data
Preparation of EDDs, SOPs, & QAPPS

For Data Validation Services, contact:

Bill Kotas

wkotas@alphageoscience.com

Computer Modeling

Ground Water

Water Budget
Mounding Analysis
Fate & Transport Modeling

Surface Water

Hydrology and Hydraulics
Dam Breach
Storm Water Runoff

Other Service Areas Include

Environmental Investigations
Mining • Water Resources • Energy • Expert Opinion
Geotechnical • GIS and Data Management



Scott Hulseapple, PG

shulseapple@alphageoscience.com

679 Plank Road • Clifton Park, New York 12065 • Ph: 518-348-6995

www.alphageoscience.com



HMPGA PROGRAM DIRECTORS

Being active in HMPGA is a fully volunteer activity that often demands a great deal of attention.

The following members chair this year's committees and we thank them:

Webmaster

Scott Hulseapple

shulseapple@alphageoscience.com

Newsletter

Josh Gowan

jgowan@alphageoscience.com

Educational Outreach

Joe Osso

Joseph.Osso@nyserda.ny.gov

Programs

Jesse Vollick

Jesse.vollick@ramboll.com

Membership

Vacant

HMPGA CALENDAR

DATE	SPEAKER	TOPIC
October 13, 2021	Ed Landing	Former State Paleontologist speaking at the NYS Museum
November 17, 2021	Greg Walsh USGS	USGS new efforts at geologic mapping, airborne geophysics, geochronology, geochemical sampling in the ADKs
December 15, 2021	Holiday Party	Gathering at the Century House
January 19, 2022	Jon S. Fox, PG Fox Professional Geology, PLLC	Title TBD - petrography/reactive minerals in selected bedrock formations (and associated geochemical considerations such as abiotic natural attenuation)

OTHER EVENTS:

Watch our website (<http://www.hmpga.wildapricot.org/>), Facebook, and LinkedIn for announcements of future events!



PWGC
CLIENT DRIVEN SOLUTIONS

- Mine Planning
- Reserves Analysis & Stockpile Inventories
 - Stormwater Design, Permitting, & Compliance
 - Hydrogeologic Impact Studies
- Petroleum & Chemical Bulk Storage Permitting, Compliance, & SPCC Plans
 - Air Permitting & Compliance
 - Energy/Sustainability Solutions



Maryann Ashworth, PG | 63 Putnam Street, Suite 202, Saratoga Springs, NY 12866 | 518-335-3636

P.W. Grosser Consulting, Inc.

Bohemia, NY • New York, NY • Syracuse, NY • Saratoga Springs, NY • Seattle, WA • Shelton, CT

Corporate Member Contacts 2021 - 2022

Alpha Geoscience	Scott Hulseapple	518.348.6995
Brown & Caldwell	Frank Williams	518.560.5912
Continental Placer	Bill Miller	518.458.9203
Corbett Industrial Cleaners	Lynne Farrell	518.688.7393
Fox Professional Geology, PLLC	Jon Fox	315.935.5467
Geotech Environmental Equipment, Inc.	Peter Murray	802.651.3050
Griggs - Lang Consulting Geologists and Engineers,P.C.	Jeff Lang	518.270.5920
H2H Geoscience Engineering	Richard Hisert	518.270.1620
Hanson VanVleet, LLC	Kirby VanVleet	518.371.7940
HRP Associates	Stefan Truex	888.867.9282
Hydrogeologic, Inc	Eric Evans	518.877.0309
LaBella Associates (fka Aztech Environmental Technologies)	Fil Fina III P.E.	518.885.5383
Parratt Wolff, Inc.	Danylo Kulczycky "DK"	800.782.7260
PVE Sheffler	Chris Brown	845.454.2544
PW Grosser Consulting, Inc.	Elyssa Usefop	518.879.0636
Ramboll Americas Engineering Solutions, Inc.	Jesse Vollick	518.724.7265
Sterling Environmental Engineering, P.C.	Andrew Millspaugh	518.456.4900

OCTOBER'S

GEO - CRYPTO CIPHER

CLUE: P = T

Each letter of the expression is substituted by another letter.

PW ALOADLO NWL MLVRPDSSWULDATV MSDRR, PTO

UOWSWUV RPKYOPG PLCOY CRWQOPLCM OBMOLMCROR

MAY'S SOLUTION

GEO - CRYPTO CIPHER

WHAT ARE MOST MINERAL LATTICES BUILT ON?
THE SILICA TETRAHEDRON (Apologies for missing "A" from TETRAHEDRON)



Eastern New York (ENY) Chapter of the Air & Waste Management Association (MASS-A&WMA). They encompass the greater Capital District and Hudson Valley region of eastern New York State. A professional non-for-profit association of engineers and scientists working in the environmental field, with a particular focus on issues related to air and waste. www.awmanenychapter.wildMAYicot.org



The Geological Society of America (GSA) strives to be a leader in advancing the geosciences, while enhancing the professional growth of its members, and promoting the geosciences in the service of humankind. www.geosociety.org



The New York State Museum is a major research and educational institution. It is dedicated to promoting inquiry and advancing knowledge in the fields of geology, biology, anthropology, and history, through the investigation of material evidence germane to New York State's past, present and future. www.nysm.nysed.gov



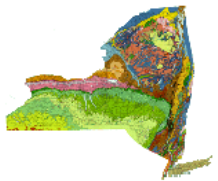
New York State Council of Professional Geologists (NYSCPG) strives to strengthen and advance the geologic sciences as a profession, promote the protection of public health and welfare and the environment through the professional practice of geologic sciences, and create high standards of ethical conduct among its members and within the profession of geology, as well as the legal standing of geologists and their ability to practice geology in New York State by promoting the licensing of geologists in New York State through statutory regulation. www.nyscpge.org

Environmental Breakfast Club

The Capital District Environmental Breakfast Club is an informal group of environmental professionals that meets monthly to discuss current environmental issues. Each meeting features a speaker on a topic of interest, a regulatory update, and an open forum. Meetings are held on the first Friday of each month except July and August. The Environmental Breakfast Club meets at the Holiday Inn Turf on Wolf Road in Colonie, New York. Meetings start at 7:30 am. The cost is \$15 per person, which includes a full breakfast buffet. www.youngsommer.com



Buffalo Association of Professional Geologists (BAPG) conducts regular membership meetings on the third Wednesday of the month, January through June and September through November. Meetings feature distinguished speakers and interesting topics. Field trips and technical seminars sponsored by the BAPG encourage the exchange of scholarship and expertise. www.bapg.org



Central NY Association of Professional Geologists (CNYAPG) conducts regular meetings on the second Thursday of each month, unless otherwise posted, from September to May. Meetings feature dinner and distinguished speakers whose presentations invite comment and discussion. www.cnyapg.org



Long Island Association of Professional Geologists (LIAPG) is a not-for-profit professional organization dedicated to the professional and business needs of geologists located in the Long Island / Metro New York area. www.lipg.org



HMPGA
679 Plank Road #300
Clifton Park, NY 12065

Forwarding Service Requested

First Class